

**VOL. 144 NO. 5 NOV. 2008**

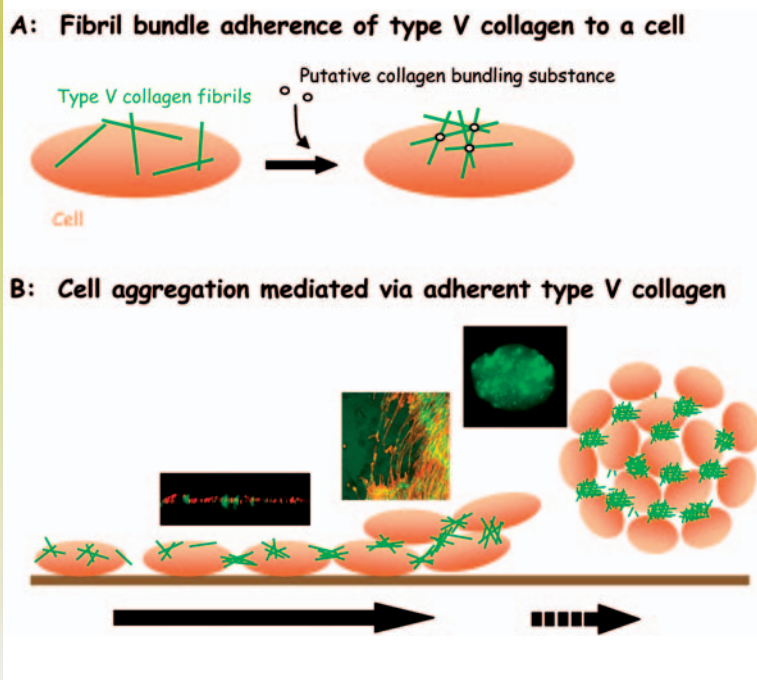
**JOBIAO 144 (5) 555-692 (2008)**

# THE JOURNAL OF BIOCHEMISTRY

# JB

Published Monthly by THE JAPANESE BIOCHEMICAL SOCIETY

**BIOCHEMISTRY  
MOLECULAR BIOLOGY  
CELL  
BIOTECHNOLOGY**



# EDITORIAL BOARD

## *Editor-in-Chief*

Naoyuki TANIGUCHI (Suita)

## *Editors*

<i>JB Reviews</i>	Sen-itiroh HAKOMORI (Seattle) Atsushi MIYAJIMA (Tokyo)
<i>Biochemistry</i>	Gerald W. HART (Baltimore) Seiki KURAMITSU (Toyonaka) Bettie Sue MASTERS (San Antonio) Akemi SUZUKI (Hiratsuka)
<i>Molecular Biology</i>	Walter NEUPERT (München) Yoshihide TSUJIMOTO (Suita)
<i>Cell</i>	Frank D. BÖHMER (Jena) Kohei MIYAZONO (Tokyo)
<i>Biotechnology</i>	Chris Y. H. TAN (Vancouver, Canada) Takuya UEDA (Tokyo)

## *Managing Editors*

Ikuko HARA-NISHIMURA (Kyoto) Yoshinobu NAKANISHI (Kanazawa)

## *Associate Editors*

<i>JB Reviews</i>	Anindya DUTTA (Charlottesville) Tatsuro IRIMURA (Tokyo) Shigeaki KATO (Tokyo)	Hisao MASAI (Tokyo) Hiroshi OHNO (Yokohama)
<i>Biochemistry</i>	Fumio ARISAKA (Yokohama) Vytas A. BANKAITIS (Chapel Hill) Junichi FUJII (Yamagata) Yuji GOTO (Suita) Koichi HONKE (Nankoku) Shoichi ISHIURA (Tokyo) Johannis P. KAMERLING (Utrecht)	Nobuo KAMIYA (Osaka) Makoto KIMURA (Fukuoka) Ken KITAJIMA (Nagoya) Katsuyuki TANIZAWA (Ibaraki) Masato UMEDA (Uji) Yuriko YAMAGATA (Kumamoto) Takehiko YOKOMIZO (Fukuoka) Pradman K. QASBA (Frederick) Takashi SUDA (Kanazawa) Takeshi TODO (Suita)
<i>Molecular Biology</i>	Yukio FUJIKI (Fukuoka) Kenji KOHNO (Ikoma) Bok Luel LEE (Busan) Shoko NISHIHARA (Hachioji) Suk-Chul BAE (Gaesindong) Nils BROSE (Gottingen) Yutaka HATA (Tokyo) Shigeki HIGASHIYAMA (Toon) Takeshi IWATSUBO (Tokyo) Akira KIKUCHI (Hiroshima)	Eunjoon KIM (Daejeon) Tohru KOZASA (Chicago) Aristidis MOUSTAKAS (Uppsala) Atsuko SEHARA-FUJISAWA (Kyoto) Toshiyuki TAKAI (Sendai)
<i>Cell</i>	Yo KIKUCHI (Toyohashi) Sunghoon KIM (Seoul) Wlodzimierz J. KRZYZOSIAK (Poznan) Keiko MIZUTA (Higashihiroshima)	Ken-ichi NISHIYAMA (Tokyo) Kouhei TSUMOTO (Kashiwa) Kazuo YAMAMOTO (Tokyo)
<i>Biotechnology</i>		

## *Advisory Board*

<i>Biochemistry</i>	Junken AOKI (Sendai) Jin Won CHO (Seoul) Catherine E. COSTELLO (Boston) Jeffrey D. ESKO (La Jolla) Jianguo GU (Sendai) Yann GUÉRARDEL (Villeneuve d'Ascq) Robert S. HALTZWANGER (Stony Brook) Toshiharu HASE (Suita) Yasuhiro HASHIMOTO (Fukushima) Kihachiro HORIIKE (Otsu) Yoshizumi ISHINO (Fukuoka) Makoto ITO (Fukuoka) Kenji KADOMATSU (Nagoya)	Reiji KANNAGI (Nagoya) Shun-ichiro KAWABATA (Fukuoka) Ikuro KAWAGISHI (Koganei) Gota KAWAI (Narashino) Hiroshi KITAGAWA (Kobe) Masayasu KOJIMA (Kurume) Hiroki KONDO (Izuka) Michiko KONNO (Tokyo) Yasunori KOZUTSUMI (Kyoto) Ryoji MASUI (Toyonaka) Catharina Taiko MIGHTA (Yamaguchi) Toru NAKAYAMA (Sendai) Hisashi NARIMATSU (Tsukuba)	Takeshi NIKAWA (Tokushima) Haruko OGAWA (Tokyo) Toshihisa OHSHIMA (Fukuoka) Michael PIERCE (Athens) Yoshihiro SAMBONGI (Higashi-Hiroshima) Ryo TAGUCHI (Tokyo) Yoshinao WADA (Izumi) Keisuke WAKASUGI (Tokyo) Akihiko YOSHIMURA (Fukuoka) Tohru YOSHIMURA (Nagoya) Junn YANAGISAWA (Tsukuba)
<i>Molecular Biology</i>	Masato ENARI (Tokyo) Toshiya ENDO (Nagoya) Masatoshi FUJITA (Tokyo) Tetsuro KOKUBO (Yokohama) Won-Jae LEE (Seoul) Roland LILL (Marburg)	Katsuyoshi MIHARA (Fukuoka) Masayuki MIURA (Tokyo) Masamichi MURAMATSU (Kanazawa) Kazuhiro NAGATA (Kyoto) Kunihiro OHTA (Tokyo) Takashi OSUMI (Hyogo)	Kazuhiro SAKAMAKI (Kyoto) Shigeomi SHIMIZU (Tokyo) Kaoru SUGASAWA (Kobe) Minoru TAKATA (Kyoto) Tohru YOSHIIHISA (Nagoya)

### *Cell*

Tomoichiro ASANO (Hiroshima)  
Mitsunori FUKUDA (Sendai)  
Masato HASEGAWA (Tokyo)  
Thorsten HEINZEL (Jena)  
Hidenori ICHJO (Tokyo)  
Yasuki ISHIZAKI (Maebashi)  
Bong-Kiun KAANG (Seoul)  
Dimitris KARDASSIS (Heraklion)

Michael KLAGSBRUN (Boston)  
Hitoshi KUROSE (Fukuoka)  
Noboru MIZUSHIMA (Tokyo)  
Tatsushi MUTA (Sendai)  
Hideaki NAGASE (London)  
Koh-ichi NAGATA (Kasugai)  
Kazuhisa NAKAYAMA (Kyoto)  
Hitoshi OHMORI (Okayama)

Chie SAKANAKA (South San Francisco)  
Takuya SASAKI (Tokushima)  
Kiyotoshi SEKIGUCHI (Suita)  
Roger K. SUNAHARA (Ann Arbor)  
Kazuma TANAKA (Sapporo)  
Keiko UDAKA (Nankoku)  
Tamotsu YOSHIMORI (Suita)

### *Biotechnology*

Toshihiko EKI (Toyoashi)  
Yoshihisa HAGIHARA (Ikeda)  
Jun HIRABAYASHI (Tsukuba)

Mitsuhiro ITAYA (Tsuruoka)  
Yasushi KAWATA (Tottori)  
Katsumi MAENAKA (Fukuoka)

Makoto MAKISHIMA (Tokyo)  
Tomoaki MATSUURA (Suita)  
Hirosu UEDA (Tokyo)

---

This JOURNAL, devoted to publication of original papers in the fields of biochemistry, molecular biology, cell, and biotechnology, was founded in 1922.

The JOURNAL is published monthly, with two volumes per annum.

All correspondences concerning this JOURNAL should be addressed to: The Japanese Biochemical Society, Ishikawa Building-3f, 25-16, Hongo 5-chome, Bunkyo-ku, Tokyo 113-0033, Japan. Tel. +81-3-3815-1913, Fax. +81-3-3815-1934

### *Subscription*

Annual subscription rate (Volume 143 and Volume 144, 2008)

Print and Online £231.00/ \$439.00/ €347.00

Online Only £219.00 /\$416.00 /€329.00

Print Only £219.00 /\$416.00/ €329.00

Methods of Payment

- (1) By cheque in £ sterling drawn on a UK bank, € Euro drawn on a European bank, or in \$ US drawn on a US bank. Cheques should be made payable to Oxford Journals. All orders should be accompanied by full payment and sent to your nearest Oxford Journals office.
- (2) By bank transfer to Barclays Bank Plc, Oxford Group Office, Oxford (bank sort code: 20-65-18) (UK). Overseas only: SWIFT BARC GB 22.
  - GB £ Sterling to a/c no 70299332 – IBAN GB89BARC20651870299332
  - US \$ Dollars to a/c no 66014600 – IBAN GB27BARC20651866014600
  - EU € Euros to a/c no 78923655 – IBAN GB16BARC20651878923655Please quote our renewal/invoice number and subscriber (if known) when making payment.
- (3) By MasterCard, Switch/Maestro, Visa, or American Express.
- (4) By charge card: automatic annual charge to either Visa or MasterCard is available. Please contact us for further details.

### *Agencies*

Oxford University Press  
Journals Subscription Department  
Great Clarendon Street  
Oxford, OX2 6DP, UK

Japan Publications Trading Co., Ltd.  
P.O. Box 5030, Tokyo International,  
2-1, Sarugaku-cho 1-chome, Chiyoda-ku,  
Tokyo 101-0064, Japan

Maruzen Co., Ltd.  
P.O. Box 5050, Tokyo International,  
100-3199, Japan

All back issues of the *Journal of Biochemistry* from Volume 1, 1922, are available from our agency: TOA BOOK EXPORTS, INC., Ikebukuro 4-13-4, Toshima-ku, Tokyo 171-0014, Japan. Tel. +81-3-3985-4701, Fax. +81-3-3985-4703

Copyright © 2008, by the Japanese Biochemical Society

Published in association with Oxford University Press

**Notice on photocopying** With the exception of cases permitted by the Copyrights Law, such as the photocopying services provided by the libraries duly designated by government ordinance and photocopying for lectures by teachers at educational institutions, the photocopying of any part of this publication without explicit consent of the relevant author is a violation of the law. To legally photocopy any part of this publication, the person wishing to photocopy, or the corporation or organization employing such person, is recommended to enter into a comprehensive copyright approval agreement with the following trustee of copyrights from the authors:

(Except in the U.S.A.) The Copyright Council of the Academic Societies, 41-6, Akasaka 9-chome, Minato-ku, Tokyo 107-0052, Japan. Phone: 3-3475-4621, Fax: 3-3403-1738

(In the U.S.A.) Copyright Clearance Center, Inc., 222 Rosewood Drive, Danvers, MA 01923, U.S.A. Phone: 978-750-8400, Fax: 978-646-8600

## NOTES TO CONTRIBUTORS

The JOURNAL OF BIOCHEMISTRY publishes contributions written in English and submitted in the form of (1) Regular paper or (2) Rapid communication, covering materials requiring prompt publication.

The submission of a manuscript implies that the work has not been published previously, that it is not under consideration for publication elsewhere, and that if it is accepted for publication, the author(s) will grant an exclusive license to publish to the Japanese Biochemical Society.

Manuscripts should be succinct. No length limit is set for a Regular paper, whereas a Rapid communication must not exceed 3.5 printed pages. Author charges consist of Color Charge and Offprint Charge, but there are no Page Charges.

Submission should be made through the online submission system at <<http://mc.manuscriptcentral.com/jb>>. We no longer handle submission by post. For further information on online submission, please see: Instructions for Online Submission <[http://www.oxfordjournals.org/jbchem/for\\_authors/auth1.html](http://www.oxfordjournals.org/jbchem/for_authors/auth1.html)>.

Reprints can be purchased, in lots of 50 copies, at cost prices. The orders should be submitted with the returned proof.

When submitting manuscripts, authors are asked to select one of the following four categories and its topic under which the submission should be reviewed. Please indicate this selection on the title page of the manuscript. Authors may suggest names and addresses of persons suitable for reviewing their submitted works.

### Fields and topics to be selected:

#### Fields: Topics

#### **Biochemistry:** Biochemistry General

- Protein Structure
- Protein Interaction and Recognition
- Biomolecular Structures
- Nucleic Acid and Peptide Biochemistry
- Glycobiology and Carbohydrate Biochemistry
- Lipid Biochemistry
- Enzymology
- Enzyme Inhibitors
- Biochemistry of Proteolysis
- Metabolism and Bioenergetics
- Reactive Oxygen and Nitrogen Species
- Biochemistry in Cell Membranes
- Biochemistry in Diseases and Aging
- Neurochemistry
- Immunochemistry
- Physiological Chemistry
- Biochemical Pharmacology
- Analytical Biochemistry

#### **Molecular Biology:** Molecular Biology General

- Genes and Other Genetic Materials
- Replication and Recombination
- Gene Expression
- Protein Synthesis
- DNA-Protein Interaction
- RNA Processing
- Genetic Engineering
- Genetic Diseases
- Molecular Genetics
- Molecular Evolution
- Bioinformatics

**Fields:** Topics

**Cell:** Cell General

Biomembranes, Organelles, and Protein Sorting  
Muscles  
Cytoskeleton, Cell Motility, and Cell Shape  
Extracellular Matrices and Cell Adhesion Molecules  
Cell Cycle  
Receptors and Signal Transduction  
Stress Proteins and Molecular Chaperones  
Cell Death  
Differentiation, Development, and Aging  
Neurobiology  
Tumor and Immunology

**Biotechnology:** Biotechnology General

Biomimetic Chemistry  
Biomaterials  
Bioactive Substances  
Synthetic Peptides and Oligonucleotides  
Gene and Protein Engineering  
RNA Technology  
Glycotechnology  
Immunological Engineering  
Cell and Tissue Engineering  
Transgenic Technology  
Gene Delivery Systems  
Drug Delivery Systems  
Biosensor and Bioelectronics  
New Devices in Biotechnology  
Environmental Technology

“Instructions to Authors” are printed in the January and July issues of this JOURNAL every year. Please conform to these instructions when submitting manuscripts. Reprint of “Instructions to Authors” is available.

**New Announcement** (Limited Publication)

**JOURNAL OF BIOCHEMISTRY, GENERAL CONTENTS**

Volume 37–66 (1950–1969) Cloth Bound  
700 page, including Author and Subject  
Index US \$90.00

Volume 67–98 (1970–1985) Cloth Bound  
1000 page, including Author and Subject  
Index US \$120.00

Now available through: TOA BOOK EXPORTS, INC.,  
Ikebukuro 4-13-4, Toshima-ku, Tokyo 171-0014, Japan.

## Author Index

- Abe, Yu, 563  
Abe, Yoshito, 619  
Abe-Yoshizumi, R., 635  
Adachi, E., 625  
Alexson, S.E.H., 655  
Ando, S., 675  
Asai, R., 691  
Asamitsu, K., 581  
  
Barr, M.L., 571  
  
Cooksey, R.C., 599  
  
Gohara, R., 675  
Goto, T., 619  
  
Hachimori, A., 665  
Hayashi, T., 625  
He, Y., 571  
Hibi, Y., 581  
Homma, M., 635  
Huang, H.-L., 591  
Hunt, M.C., 655  
  
Igarashi, K., 691  
Imai, K., 581  
Imamura, Y., 625  
Imoto, T., 619  
Ishida, N., 609  
  
Kakehi, Y., 685  
Kaminishi, T., 665  
Kihara, T., 625  
Kimura, S., 555  
Kitade, Y., 581  
Klein, A.S., 571  
Kojima, N., 563  
Kojima, S., 635  
Kozono, Y., 609  
Kuboki, N., 563  
Kuroda, Y., 563  
  
Landaker, E., 599  
Li, B., 643  
Li, X.Y., 555  
  
Matsumura, T., 691  
Matsushita, M., 563  
McClain, D., 599  
Miyoshi, T., 665  
Mizuno, K., 625  
  
Nakata, K., 581  
Nakatsuchi, M., 665  
Nakayama, K., 609  
Nakayama, K.I., 609  
Nishikawa, S., 675  
Nishino, Takeshi, 691  
Nishino, Tomoko, 691  
Nomura, M., 665  
  
Nomura, T., 665  
  
Ofman, R., 655  
Ohkuri, T., 619  
Ohsaki, K., 609  
Oishi, K., 609  
Okamoto, T., 581  
Okamoto, K., 691  
Onozaki, K., 581  
  
Pai, E.F., 691  
Park, J., 599  
Patti, M.-E., 599  
  
Reilly, S.-J., 655  
Ren, L.-L., 591  
Ruddock, M.W., 599  
  
Satoh, Y., 555  
Shibahara, S., 643  
Shioi, S., 619  
Shirouzu, M., 665  
Sogawa, K., 555  
Stein, A., 599  
Sugita, D., 665  
  
Takasaki, C., 555  
Takasaki, Y., 675  
Takeda, K., 643  
Takemoto, C., 665  
  
Takemura, Y., 625  
Terashima, H., 635  
Tillander, V., 655  
Tsuboi, K., 685  
  
Uchiumi, T., 665  
Ueda, N., 685  
Ueda, T., 619  
Uyama, T., 685  
  
Victoriano, A.-F.B., 581  
  
Wang, H., 571  
Wang, J., 685  
Wang, X.-B., 591  
Wu, G.D., 571  
Wu, X.-X., 685  
  
Yamaguchi, T., 581  
Yan, X.-Y., 591  
Yasumoto, K.-i., 555  
Yin, C.-C., 591  
Yokoyama, N., 563  
Yokoyama, Satoru, 643  
Yokoyama, Shigeyuki, 665  
  
Zhang, Z., 591  
Zhao, L.-Y., 685  
Zhu, H., 571  
Zhu, L.-L., 591

**COVER:** Mechanism of cell clump formation together with the accumulation and condensation of type V collagen fibrils into the intercellular spaces. Type V collagen fibrils and cells are represented by green lines and orange ellipses respectively. (A) Fibril bundle adherence of type V collagen to a cell. When substances (open circle) that can bind type V collagen fibrils are secreted on cell peripheries, cell adherent type V collagen fibrils are interlinked with each other. (B) Cell aggregation mediated via adherent type V collagen. The size and density of condensed type V collagen fibrils increase in the intercellular space. The strong affinity of type V collagen fibrils with the cells as well as with the substances that combine type V collagen fibrils result in the cementing of cells. Type V collagen eventually condenses on cell aggregates and causes cell clump formation. [See Kihara *et al.*; p. 625]